



Lowland Tapir © PhotocechCZ



Giant Otter © Sergey Uryadnikov

Save 450,000 Acres of High-carbon Amazon Rainforest from Deforestation

The Peruvian Amazon covers over 60% of Peru's landscape—an area three times the size of Kansas. Within this vast rainforest, where the Putumayo River defines the curving border between Colombia and Peru, a highly biodiverse region known as the Bajo Putumayo-Yaguas-Cotuhé landscape spreads across 6.7 millions acres of abundant biodiversity, named for the rivers that cross it.

Because of its remote location and proximity to a large, navigable river, the area is highly threatened by criminal enterprises engaging in illegal land trafficking, illegal gold mining and illicit coca cultivation. These activities lead to hunting, illegal wildlife trade, degradation and deforestation.

Rainforest Trust and our partner, the Frankfurt Zoological Society Peru, seek \$296,984 to secure and manage 450,000 acres as a Conservation Concession, a legal mechanism for safeguarding an area of high biodiversity value in Peru. Land owned by the government is leased and managed by a private entity committed to protecting it from deforestation and other unauthorized resource extraction.

This status, when managed well, will safeguard Cotuhé for numerous threatened species, including Endangered Giant Otter and Amazon River Dolphin, Vulnerable Yellow-footed Tortoise, and the most diverse community of freshwater fish species in Peru of at least 450 unique species. The diverse populations of fish, birds and mammals in the Bajo Putumayo-Yaguas-Cotuhé region provide food sovereignty for the Indigenous and local communities living near the proposed concession.

CONSERVE A CARBON-RICH, BINATIONAL WILDLIFE CORRIDOR

The new conservation area in Cotuhé protects the entire Cotuhé watershed and connects to a biological corridor of more than 3.5 million acres of vital habitat. It is directly adjacent to the 2.1-million-acre Yaguas National Park and it connects with the 725,120-acre Amacayacu National Park across the border in Colombia.

The Cotuhé area is one of the top carbon stores in Peru with 115,469,346 metric tons of CO₂ equivalents—which, if released, would be comparable to the 2021 emissions of Norway, Finland and Sweden combined. Other flagship species within the Cotuhé area include the Vulnerable Harpy Eagle, and the threatened tree known as Spanish Cedar. The Vulnerable Amazonian Manatee, Giant Armadillo and Lowland Tapir are also found in this project. The new management plan will enable ongoing monitoring of important species.



450,000
ACRES

\$296,984
PROJECT COST

\$0.66
COST PER ACRE

115,469,346 mT
CO₂ EQUIVALENTS
STORED

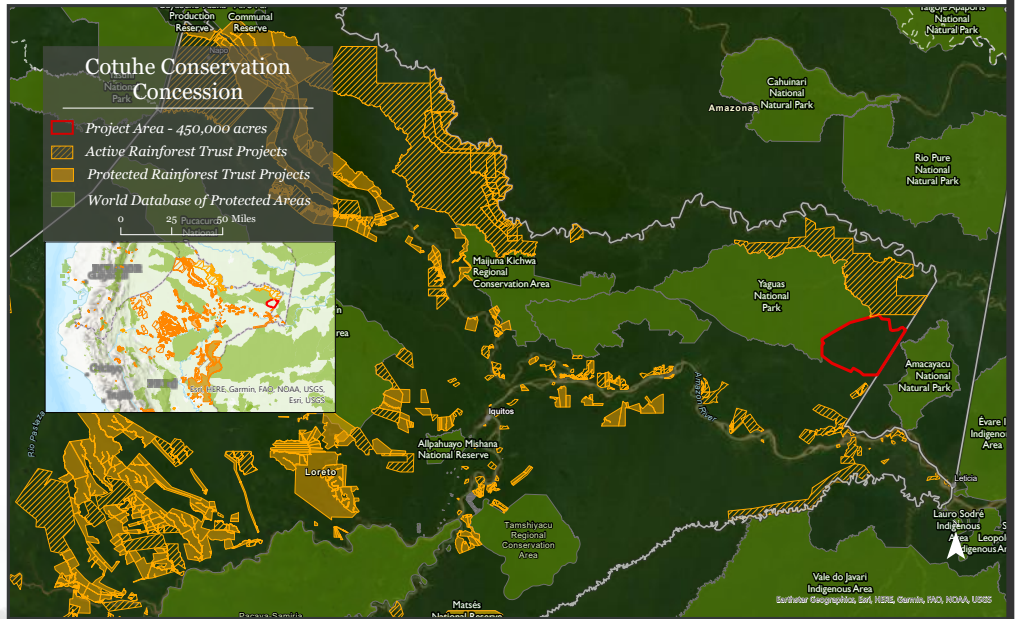
KEY SPECIES:

Giant Otter (EN),
Amazon River Dolphin (EN),
Yellow-footed Tortoise (VU)



CREATE A STRONGHOLD AGAINST RAINFOREST DESTRUCTION IN PERU

The availability of this vast concession area in Peru offers a rare opportunity to rescue a high-value ecological gem in the Peruvian Amazon and secure proper management for it. Our partner's extensive experience in this region will enable them to work closely with local communities, government and other stakeholders to safeguard the area.



Manatee in project area, courtesy of local partner © Guillermo Abadie

